

### **Important Changes:**

- Only staff overflow Parking will be allowed in Lot B after 2:30 pm. (see orange cars in diagram)
- Parking Spaces in Lot A will be for Staff Only.
- If you need to enter the building to conduct business, please do so between the hours of 7:45 and 2:30.
- If you need to enter the building between 2:30 and 3:30, you will need to park on the street and walk onto our campus or park in the car pick up lines and run in. There will be no public parking spaces available between 2:30 and 3:30.
- When walking in the parking lot at anytime, please model safety and use crosswalks.

### **Walkers/Bike Riders**

- Students walking or riding bikes will be dismissed at 3:15. Students will exit the front doors.
- Students walking or riding bikes will be asked to leave the property immediately, to allow for safe dismissal of all vehicles.
- All bike riders will be asked to push their bike or scooter while on campus during dismissal
- If you plan to pick your student up somewhere off campus, your student is considered a walker.
- The path for walkers is shown in Blue on Map #4

### **Student Pick Up Via Car**

- Adults Picking up children via Car Pick-Up should follow the red arrows on the map and go into Lot B.
- There will be no back line. The lines will fill entirely and a new line will begin.
- Please stay in your lane. Departing from your lane is unsafe and slows down the dismissal process.
- Your child will be released at 3:15 and should come directly to your car, enter the car and put on their seatbelt.
- Cars will be released, by row, once walkers and bike riders have left the property.
- Please be patient and model the expectations we have for our students. They will do what they see you doing. If you are being respectful, responsible, safe and kind, they will too.

### **Preschool/Specialized Classrooms/Bus Riders**

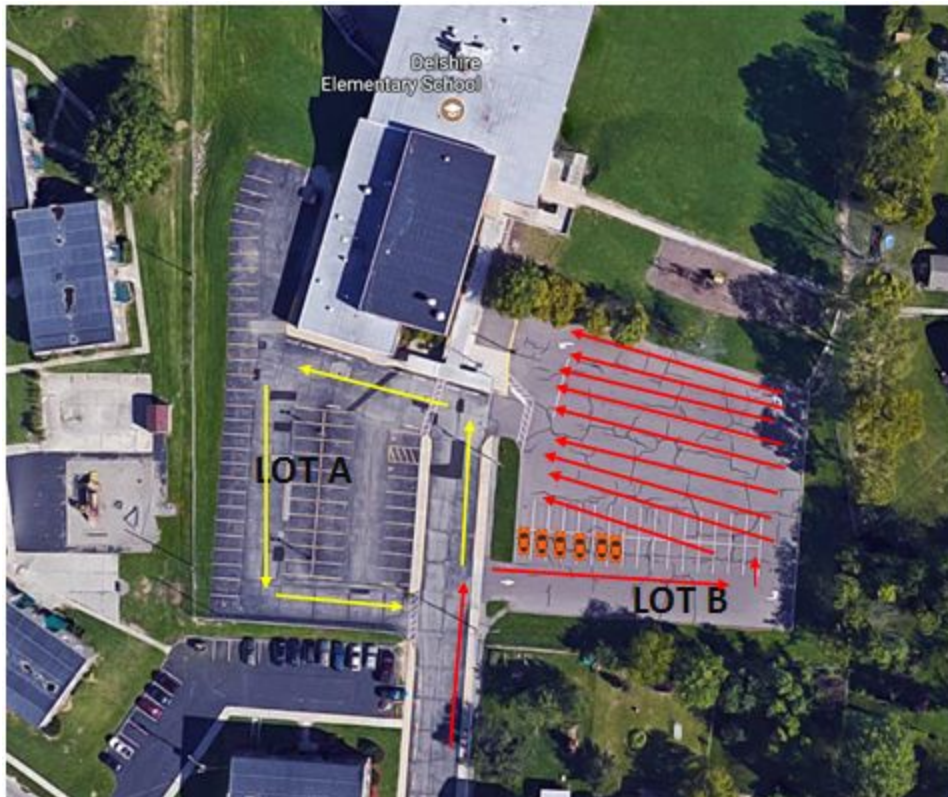
- Adults picking up children from Preschool and Specialized Classrooms and all buses will follow the Yellow lines on the map and will go into Lot A.
- Please do not park your vehicles in the parking lot. Please pull up against the gym doors and follow the yellow arrows on the map to exit. Someone will bring your child out to you.
- There will be an employee releasing you from the lot. All cars will be held after 3:15 and until all walkers and bike riders have left the property.
- You must have your parking pass visible to enter Lot A. If you do not have a parking pass (provided from your child's teacher), you will need to enter Lot B.

**Parking Overview (Map #1):**

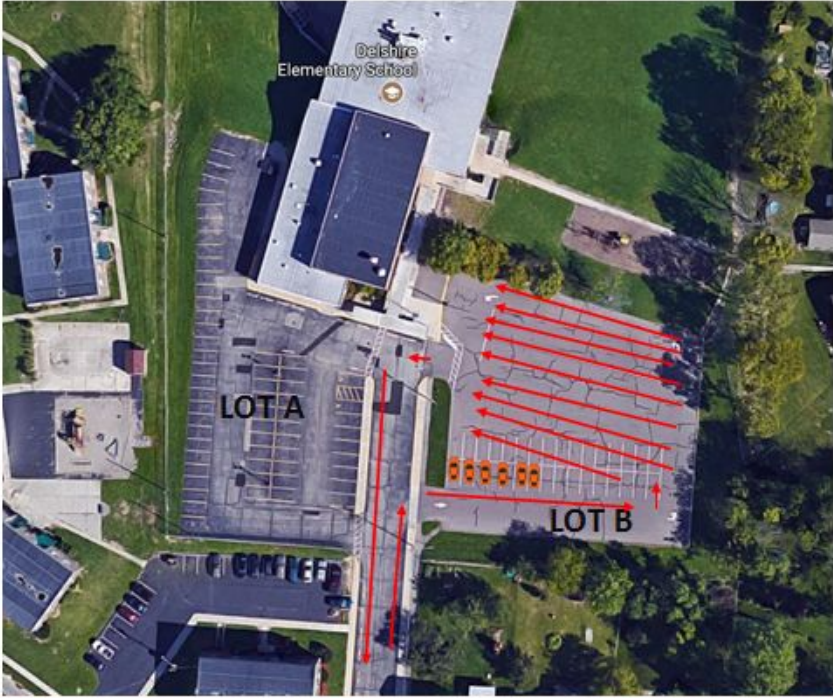
Solid Lines: Car Pick Up

Dashed Lines: Specialized Classrooms/Preschool/Bus lines (pass needed)

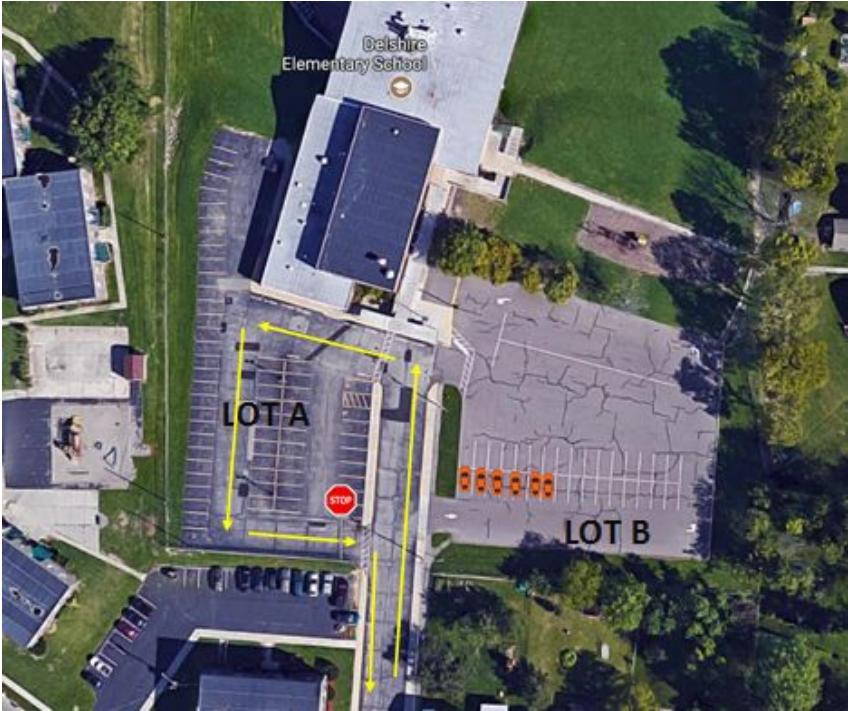
Vehicles: Staff Parking Only (pass needed)



**Car Riders ONLY (Map #2):**



**Specialized Classrooms/Bus/PreSchool ONLY (Map #3):**



**Walkers ONLY (Map #4):**

